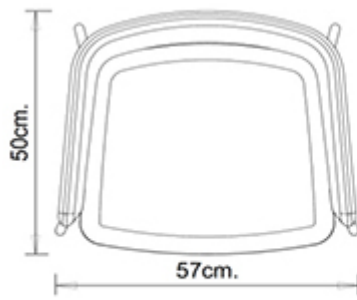
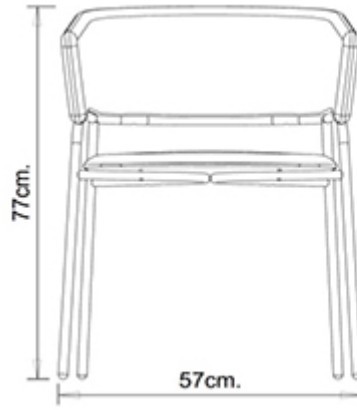


Play 538

PLAY COLLECTION:
Play 538,



Armchair with steel frame, 4 legs. Upholstered seat and back.

WEIGHT

7,7 Kg

PACK

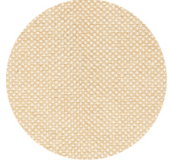
0,26 m³

PIECES PER BOX

1

FINISHES SEATING

TE FABRICS



Sawana Davis
+ 24 colours



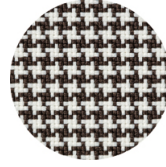
Citadel Camira
+ 16 colours



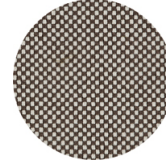
Inca Abitex
+ 15 colours



Medley Gabriel
+ 14 colours



Go-Couture Gabriel
+ 8 colours



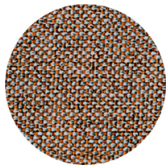
Go-Check Gabriel
+ 13 colours



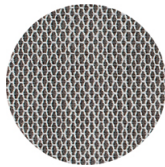
Crazy Flukso
+ 7 colours



Xtreme Camira
+ 16 colours



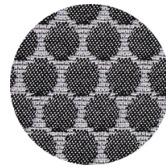
Rivet Camira
+ 12 colours



Criss Cross Gabriel
+ 19 colours



Valencia Spradling
+ 17 colours



Bubble Flukso
+ 9 colours



Europost 2 Gabriel
+ 16 colours



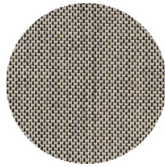
Fame Gabriel
+ 23 colours



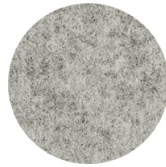
Parotega NF
Skai Hornschuch
+ 8 colours



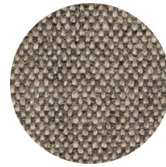
Superb Flukso
+ 13 colours



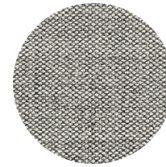
Balta Vescom
+ 12 colours



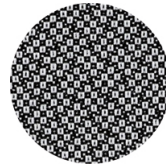
Blazer Camira
+ 14 colours



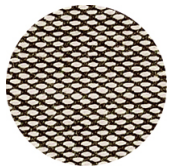
Main line flax Camira
+ 13 colours



Remix 2 Kvadrat
+ 18 colours



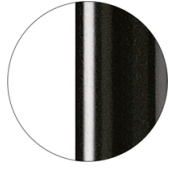
Revive 2 Kvadrat
+ 7 colours



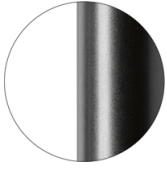
Steelcut trio 3 Kvadrat
+ 20 colours

FRAMES

AC STEEL



RAL 9005
VR Jet black



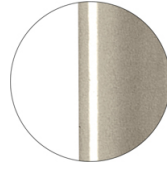
RAL 9005
VR Matt Jet Black



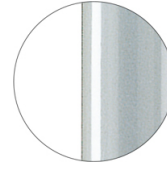
RAL 9016
VR Traffic white



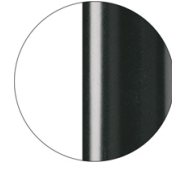
RAL 9010
VR Pure white



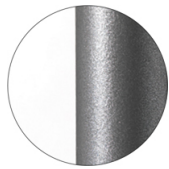
PANTONE 402 C
VR Turtle-dove



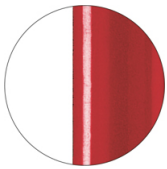
RAL 9006
VR White aluminium



RAL 7016
VR Anthracite grey



VR Pewter



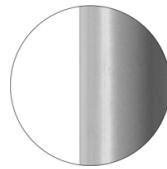
RAL 3003
VR Ruby red



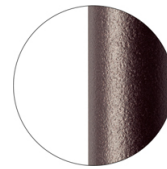
RAL 8017
VR Chocolate brown



RAL 6005
VR Moss green



RAL 7037
VR Matt Dusty grey



VR Rough metallic
bronze



CR Chrome

CERTIFICATIONS

- > UNI/EN 16139:2013 - Par.4.1. Generale. 4.2 Cesoiamento (24/04/15)
- > UNI/EN 16139:2013 - Par.4.3. Stabilità (24/04/15)
- > UNI/EN 16139:2013 - Prova 1. Carico statico sedile e schienale: 2-Uso estremo (24/04/15)
- > UNI/EN 16139:2013 - Prova 10. Prova di fatica dei braccioli: 2-Uso estremo (24/04/15)
- > UNI/EN 16139:2013 - Prova 12. Carico statico gambe anteriori: 2-Uso estremo (24/04/15)
- > UNI/EN 16139:2013 - Prova 13. Carico statico gambe laterali: 1-Uso generale (14/05/15)
- > UNI/EN 16139:2013 - Prova 2. Carico statico sul fronte anteriore: 2-Uso estremo (24/04/15)
- > UNI/EN 16139:2013 - Prova 3. Carico verticale sullo schienale: 2-Uso estremo (24/04/15)
- > UNI/EN 16139:2013 - Prova 5. Carico statico laterale sui braccioli: 2-Uso estremo (24/04/15)
- > UNI/EN 16139:2013 - Prova 6. Carico statico verticale verso il basso sui braccioli: 2-Uso estremo (24/04/15)
- > UNI/EN 16139:2013 - Prova 8. Prova di fatica sedile e schienale: 2-Uso estremo (24/04/15)
- > UNI/EN 16139:2013 - Prova 9. Prova di fatica sul bordo anteriore: 2-Uso estremo (24/04/15)

USES

coffee & restaurants, hotels, educational, entertainment, travel, office and waiting areas, retail, health care,